

NIKEE.



S E R I E S



Acoustic intelligence - that's the best way to describe what KEF engineers have applied to create a new range worthy of the award-winning Q Series it replaces. Hence the name: iQ. From the second you spot the soft sheen of titanium on the main driver cones, you know you're in for something special. And you won't be disappointed. Because we've taken a long, hard look at the inherent advantages of KEF's trademark Uni-Q® technology - consistently detailed imaging and unrivalled off-axis response - and improved it in dozens of ways. With new cone materials and surrounds.

Redesigned magnet structures. New, state-of-the-art voice coils. Higher specification components. More rigid chassis and cabinets. The result of all these innovations is plain to hear. Power handling and sensitivity are better than ever. iQ plays loud and true, with even clearer vocals than its illustrious predecessor. Even gutsier and more tightly controlled bass. And of course the impeccable extended bandwidth response you need to get the most out of the latest digital audio and home theatre formats. As every model in the range is voiced for a perfect tonal match, the 3-D soundscape is so seamlessly integrated that everyone in the room gets the full benefit, wherever they sit.

Acoustic intelligence

You don't have to be a genius to understand why Q Series speakers sound so good. After all, they incorporate the Uni-Q technology originally designed for one of the world's finest speaker ranges, KEF's legendary Reference Series.

The Uni-Q concept is based on using aerospace materials to make the tweeter small enough to place at the acoustic centre of the bass/midrange cone. With both drive units on exactly the same axis and sharing the same waveguide, they behave as a single point source that projects a more natural sound image over a much larger area than the usual tiny 'sweet spot'.

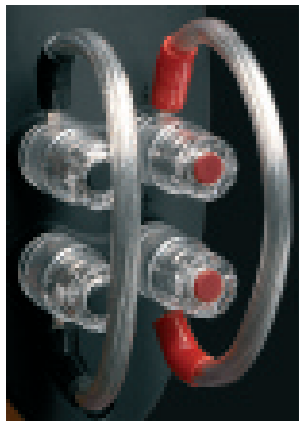
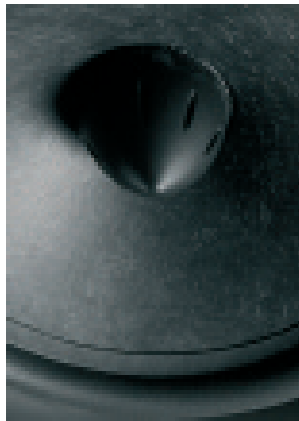
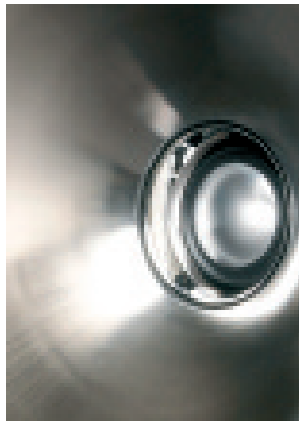
This is because the Uni-Q configuration eliminates the inherent problems of having the separate midrange and high frequency drive units of a conventional speaker. As loudspeaker radiation varies according to frequency, LF and HF drivers have intrinsically different radiation patterns whose directivity - known as 'Q' - changes at the crossover frequency. Interference (or 'lobing') between the two units causes a dip in power response around this frequency, with a peak above it due to their differences in directivity. These factors introduce colourations that muddy the sound image. You get no such problems with Uni-Q. Being coincident and perfectly time-aligned, the directivity of both LF and HF units is controlled by the profile of the midrange cone, with no possible path or phase differences between the two, and no 'lobing' interference at the crossover. The 'Q' is unified, in other words - hence the name.

So instead of narrowing towards the crossover and then widening again as is the case with separate drive units, the Uni-Q radiation pattern remains stable. Power response is uniform, with smoother variations on and off-axis. The acoustic image is better balanced and more natural sounding across both direct and reverberant fields. Multi-channel imaging is noticeably clearer and more accurate.

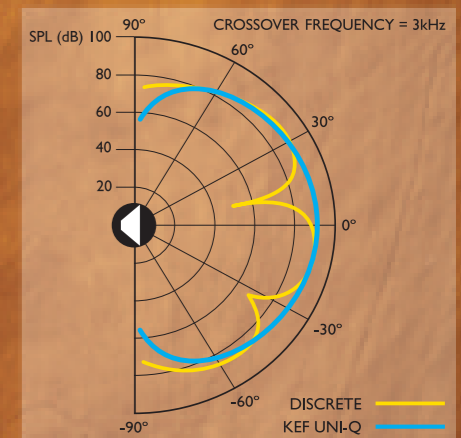
The Uni-Q array in the Q Series incorporates a sophisticated new tweeter with an aluminium dome that increases the break-up resonance to 34kHz (as compared to the 25kHz threshold of a typical standard dome). The MF voice coil is of copper-coated aluminium ribbon, expensively edge-wound over a polyimide former to increase sensitivity by maximising the amount of copper in the magnet gap.

The chassis are of precision-cast aluminium for greater rigidity, with a vented design to improve power handling. The tall profile cone surrounds are of butyl rubber to allow greater excursion, and therefore higher output. Faraday rings are incorporated into the ultra-low distortion motor, further reducing harmonic distortion by as much as 20dB. And audiophile-grade crossovers are connected to the shrouded bi-wirable terminals to ensure the cleanest possible signal transmission.

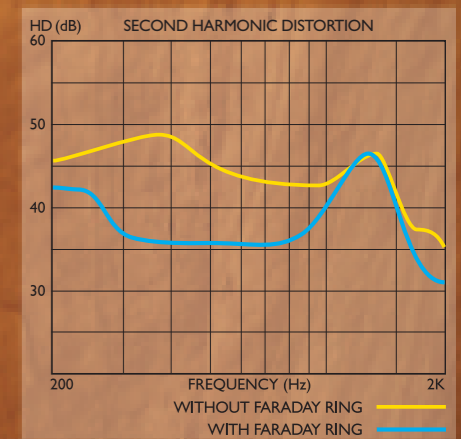
With refinements like these, no wonder the sound is so open and natural. No wonder the action on screen suddenly becomes more compelling. No wonder you get so utterly immersed in the listening experience. It's what Q Series is all about.



comparison of response at crossover frequency



comparison of Faraday ring effect



Smart thinking

With so much high-end technology inside, it's not surprising that the Q's distinctive styling bears a family resemblance to the latest Reference Series, with the Uni-Q 'pod' faired in to elliptical-section cabinets. The design was driven by functional considerations rather than aesthetics.

Curved enclosures minimise distortion from the internal acoustic reflections generated by parallel straight surfaces - but because they're complicated to make, the benefit is usually reserved for the most expensive audiophile speakers.

Q Series cabinets are thermally formed in 'heavy' MDF, whose density makes it acoustically inert to reduce unwanted colouration of the sound image. Using laminated construction techniques, with inner and outer layers bonded to a segmented core in a giant press, the precisely radiused panels are exceptionally rigid, with the Uni-Q arrays faired in to the cabinet. Massive internal bracing tailors the volume of each enclosure to the exact parameters of its drive unit and minimises any residual panel resonance.

All models have two pairs of fully shrouded terminals for bi-wiring or bi-amplification, and are magnetically shielded to prevent interference with other electronics.

As you'd expect, the standard of finish is exemplary, with a choice of classic Black Ash, Dark Apple and Maple - a silky contemporary grain found on no other range.

Black Ash



Dark Apple



Maple



Brand new Walnut and Silver finishes are available subject to special order in certain markets.





iQ5

A compact full range floorstander, the iQ5 is a true three-way speaker.

With KEF's new 130mm (5¼") long-throw LF driver delivering superbly defined bass, the midrange driver of the 130mm (5¼") Uni-Q point source array is dedicated to reproducing midrange frequencies with even greater clarity. High order crossovers ensure seamless transitions between each driver, and with Uni-Q's remarkable off-axis dispersion characteristics, you get a speaker that's as easy to place as it is rewarding to hear - especially for enjoying the richness and complexity of modern digital formats. Ideal for use with iQ1 and iQ2c in a home theatre system, it's a superbly assertive performer for the modest size of its slender cabinet and outstanding value if you aspire to genuine audiophile standards of sound reproduction.



iQ1

The new iQ1 proves that with the right technology, you don't need big boxes to enjoy audiophile quality sound.

If you want to create a rich, expansive soundscape in a smaller room without compromising sonic accuracy, it delivers the full benefit of KEF's latest design thinking. With the sophisticated new 130mm (5¼") Uni-Q coincident driver array in a compact reflex-ported cabinet, you experience stunningly clear vocals, fluid midrange and an unusually spacious 3D sound image no matter where you sit. Being magnetically shielded like the rest of the range, they're as easy to place as they are to drive. Everything from the titanium surface of the Uni-Q cones to the shrouded bi-wire terminals says 'quality' - and for music or movies, that's exactly how iQ1 sounds.



iQ3

For even fuller presentation where the available space nevertheless dictates a bookshelf speaker, iQ3 takes all the performance advantages of the iQ1 a step further.

A slightly larger cabinet houses KEF's new generation 160mm (6½") Uni-Q array, complete with its acclaimed 19mm (¾") aluminium dome neodymium tweeter. It's uncannily good at reproducing all the subtleties of the human voice, and creates a consistently accurate sound image over an exceptionally wide area. Musical, efficient and virtually distortion-free, it reveals more detail in your favourite tracks and brings screen action more vividly to life.





iQ7

A full bandwidth three-way floorstander that packs real punch, iQ7 floods even the largest room with an intricate and intensely physical 3D soundscape.

The spec says it all: a new generation Uni-Q point source array with our latest aluminium dome tweeter at the centre of the matching titanium-coated 160mm (6½") cone, partnered by a dedicated long-throw bass driver of the same size. Response is accurate and distortion-free at all volumes, with fluidly articulate midrange, generous bass extension and faultless 3-D imaging. The tonal match is perfect with the rest of the range, and the shrouded terminals are designed for bi-wiring or bi-amplification. Spine-tingling home theatre has never been more affordable.

iQ9

Breathtaking is the only word to describe it.

Hearing the iQ9 in action takes you to a different place - the illusion of presence is phenomenal. This awesome full size bass reflex floorstander partners the latest 160mm (6½") Uni-Q mid/HF array with a brace of potent new generation LF drivers featuring ultra-low distortion motors and natural fibre-loaded paper cones. Impeccable vocals, delicious midrange and incredible bass extension - and with KEF's massive internal bracing, none of the LF distortions that usually affect tall speakers. For orchestral, big band or compositionally intricate works, we're talking devastating accuracy and emotional power. And when complemented by the iQ6c and either iQ3 or iQ7 rear channel speakers, iQ9 is a formidably competent full bandwidth front speaker for large room, high-end home theatre.





Powered Subwoofers

As the lower frequencies play such a big part in recreating the 3-D soundscape encoded in digital formats, your choice of subwoofer is critical - especially if you want to enjoy the level of sonic immersion you experience in a modern cinema.



iQ2c

The pleasures of home cinema depend largely on the quality of your centre channel speaker. This is an area where the unrivalled dispersion characteristics of KEF Uni-Q technology make a real difference - the 130mm (5 1/4") Uni-Q array in the iQ2c projects on-screen dialogue with equal clarity and realism throughout the room. Configured for bi-wiring or even bi-amplification like all the Q Series, its smooth midrange and fast transient attack delivers the listening enjoyment of high-end audio technology at a surprisingly modest price.

iQ6c

If you're really serious about home entertainment, iQ6 is the way to go. With the same 130mm (5 1/4") Uni-Q point source array flanked by two equally large long-throw, ultra-low distortion LF drivers, it combines the startling vocal clarity of KEF's latest aluminium dome 19mm (3/4") tweeter with clean, tightly controlled bass extension and high output. Screen action is precisely located in a densely textured 3-D soundscape that envelops everyone in the room. Eloquent, authoritative and deeply involving, it touches the parts other centre channels simply can't reach.



iQ8ds

As the dipole rear effects speaker for the Q Series, the two 130mm (5 1/4") Uni-Q arrays in the heavily braced curved cabinets of the iQ8ds disperse atmospheric effects encoded in digital soundtracks evenly throughout the listening area to create a sense of place so real you can almost touch it. Perfectly timbre-matched to the rest of the range, transitions are seamless and the detailing is impeccable. A simple keyhole mounting system allows effortlessly quick wall installation. Sit back and enjoy.



PSW2500

With a high efficiency 250W on-board amplifier driving a 250mm (10") down-firing woofer, PSW2500 has the power to deliver heavyweight bass effects without sacrificing clarity. With ground lift switching and movie/music modes, output is easily adjustable to match the main speakers and room acoustics. The elliptical-section cabinet is massively internally braced to eliminate unwanted internal resonance, and finished in Black, Dark Apple or Maple to complement the rest of your Q Series system.

PSW3500

When you have a 300-watt internal power amp driving a 300mm (12") long-throw woofer through audiophile grade circuitry, you expect the earth to move. KEF's PSW3500 does just that, anchoring the soundscape in a huge, all-enveloping and perfectly controlled bass presence. Output, phase and frequency are fully adjustable to your personal preferences via infrared remote, with a separate sensor that allows you to place the unit completely out of sight. A prodigious acoustic performer with the power to keep you on the edge of your seat, it's an investment in pure pleasure.



Specifications



iQ1

Design	Two-way bass reflex
Drive units	130mm (5¼") Uni-Q 19mm (¾") aluminium dome HF
Frequency response	50Hz - 40kHz
Crossover frequency	2.8kHz
Amplifier requirements	10 - 100W

Sensitivity (2.83V/1m)	88dB
Maximum output	108dB
Nominal impedance	8Ω (min 3.2Ω)
Magnetic shielding	Yes
Weight	4.5kg (9.9lbs)
Dimensions H x W x D	301 x 175 x 261 mm 11.8 x 6.9 x 10.3 in.



iQ9

Design	Three-way bass reflex
Drive units	2 x 165mm (6½") LF 165mm (6½") Uni-Q 19mm (¾") aluminium dome HF
Frequency response	38Hz - 40kHz
Crossover frequency	250Hz - 2.8kHz
Amplifier requirements	15 - 200W

Sensitivity (2.83V/1m)	91dB
Maximum output	113dB
Nominal impedance	8Ω (min 3.2Ω)
Magnetic shielding	Yes
Weight	16.6kg (36.6lbs)
Dimensions H x W x D	942 x 220 x 327 mm 37 x 8.7 x 12.9 in.



iQ3

Design	Two-way bass reflex
Drive units	165mm (6½") Uni-Q 19mm (¾") aluminium dome HF
Frequency response	45Hz - 40kHz
Crossover frequency	2.8kHz
Amplifier requirements	15 - 120W

Sensitivity (2.83V/1m)	89dB
Maximum output	110dB
Nominal impedance	8Ω (min 3.2Ω)
Magnetic shielding	Yes
Weight	6.7kg (14.8lbs)
Dimensions H x W x D	365 x 220 x 327 mm 14.4 x 8.7 x 12.9 in.



iQ2c

Design	Two-way bass reflex
Drive units	130mm (5¼") Uni-Q 19mm (¾") aluminium dome HF
Frequency response	70Hz - 40kHz
Crossover frequency	2.8kHz
Amplifier requirements	10 - 100W

Sensitivity (2.83V/1m)	89dB
Maximum output	109dB
Nominal impedance	8Ω (min 3.2Ω)
Magnetic shielding	Yes
Weight	4.7kg (10.3lbs)
Dimensions H x W x D	165 x 418 x 220 mm 6.5 x 16.4 x 8.7 in.



iQ5

Design	Three-way bass reflex
Drive units	130mm (5¼") LF 130mm (5¼") Uni-Q 19mm (¾") aluminium dome HF
Frequency response	43Hz - 40kHz
Crossover frequency	280Hz - 2.8kHz
Amplifier requirements	15 - 130W

Sensitivity (2.83V/1m)	88dB
Maximum output	109dB
Nominal impedance	8Ω (min 3.2Ω)
Magnetic shielding	Yes
Weight	10.2kg (22.5lbs)
Dimensions H x W x D	815 x 175 x 261 mm 32 x 6.9 x 10.3 in.



iQ6c

Design	Three-way bass reflex
Drive units	2 x 130mm (5¼") LF 130mm (5¼") Uni-Q 19mm (¾") aluminium dome HF
Frequency response	65Hz - 40kHz
Crossover frequency	280Hz - 2.8kHz
Amplifier requirements	15 - 150W

Sensitivity (2.83V/1m)	90dB
Maximum output	111dB
Nominal impedance	8Ω (min 3.2Ω)
Magnetic shielding	Yes
Weight	8.9kg (19.6lbs)
Dimensions H x W x D	165 x 512 x 255 mm 6.5 x 20.1 x 10 in.



iQ7

Design	Three-way bass reflex
Drive units	165mm (6½") LF 165mm (6½") Uni-Q 19mm (¾") aluminium dome HF
Frequency response	40Hz - 40kHz
Crossover frequency	250Hz - 2.8kHz
Amplifier requirements	15 - 150W

Sensitivity (2.83V/1m)	90dB
Maximum output	111dB
Nominal impedance	8Ω (min 3.2Ω)
Magnetic shielding	Yes
Weight	14.5kg (32.0lbs)
Dimensions H x W x D	865 x 220 x 327 mm 34 x 8.7 x 12.9 in.



iQ8ds

Design	Two-way closed box
Drive units	2 x 130mm (5¼") Uni-Q 2 x 19mm (¾") aluminium dome HF
Frequency response	65Hz - 40kHz
Crossover frequency	2.8kHz
Amplifier requirements	10 - 100W

Sensitivity (2.83V/1m)	83dB
Maximum output	103dB
Nominal impedance	8Ω (min 3.2Ω)
Magnetic shielding	No
Weight	5.2kg (11.5lbs)
Dimensions H x W x D	180 x 360 x 175 mm 7.1 x 14.2 x 6.7 in.

MODEL PSW2500

Design	Closed Box, downward firing
Drive units	250mm (10") ultra long-throw bass driver
Frequency response	33Hz - 150Hz
Crossover frequency	Variable
Amplifier requirements	250W built in

Sensitivity (2.83V/1m)	100mV for full output
Maximum output	108dB
Nominal impedance	N/A
Magnetic shielding	Yes
Weight	14.5kg (31.9lbs)
Dimensions H x W x D	360 x 495 x 325 mm 14.2 x 19.5 x 12.8 in.



MODEL PSW3500

Design	Closed Box, downward firing
Drive units	300mm (12") ultra long-throw bass driver
Frequency response	30Hz - 250Hz
Crossover frequency	Variable/LFE
Amplifier requirements	300W built in

Sensitivity (2.83V/1m)	100mV for full output
Maximum output	110dB
Nominal impedance	N/A
Magnetic shielding	Yes
Weight	22.5kg (49.6lbs)
Dimensions H x W x D	450 x 600 x 395 mm 17.7 x 23.6 x 15.6 in.





www.kef.com/iq



© KEF Audio (UK) 2005

KEF Audio (UK), Eccleston Road, Tovil, Maidstone, Kent, ME15 6QP U.K. Telephone: + 44 (0) 1622 672261. Fax: + 44 (0) 1622 750653 www.kef.com
KEF America, 10 Timber Lane, Marlboro, New Jersey, 07746 USA. Telephone: + 1 732 683 2356. Fax: + 1 732 683 2358 www.kefamerica.com
GP Acoustics GmbH, Heinrichstraße 51, D-44536 Lünen, Deutschland. Telephone: +49 (0) 231 9860-320. Fax: +49 (0) 231 9860-330. www.kefaudio.de

KEF and Uni-Q are registered trademarks. Uni-Q is protected under GB patent 2 236929. US patent 5,548,657. Worldwide patents pending.
KEF Audio reserve the right, in line with continuing research and development, to amend or change specifications.

PL1610EN